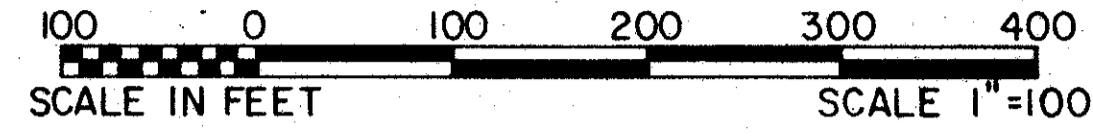


FALLS COUNTRY CLUB

BEING A REPLAT OF PART OF BLOCKS 38 AND 39 OF PALM BEACH FARMS COMPANY PLAT NO. 3
RECORDED IN PLAT BOOK 2, PAGES 45 THRU 54 INCLUSIVE

IN PART OF SECTIONS 3 AND 4, TOWNSHIP 45 SOUTH, RANGE 42 EAST
PALM BEACH COUNTY, FLORIDA
IN THREE SHEETS SHEET NO. 2

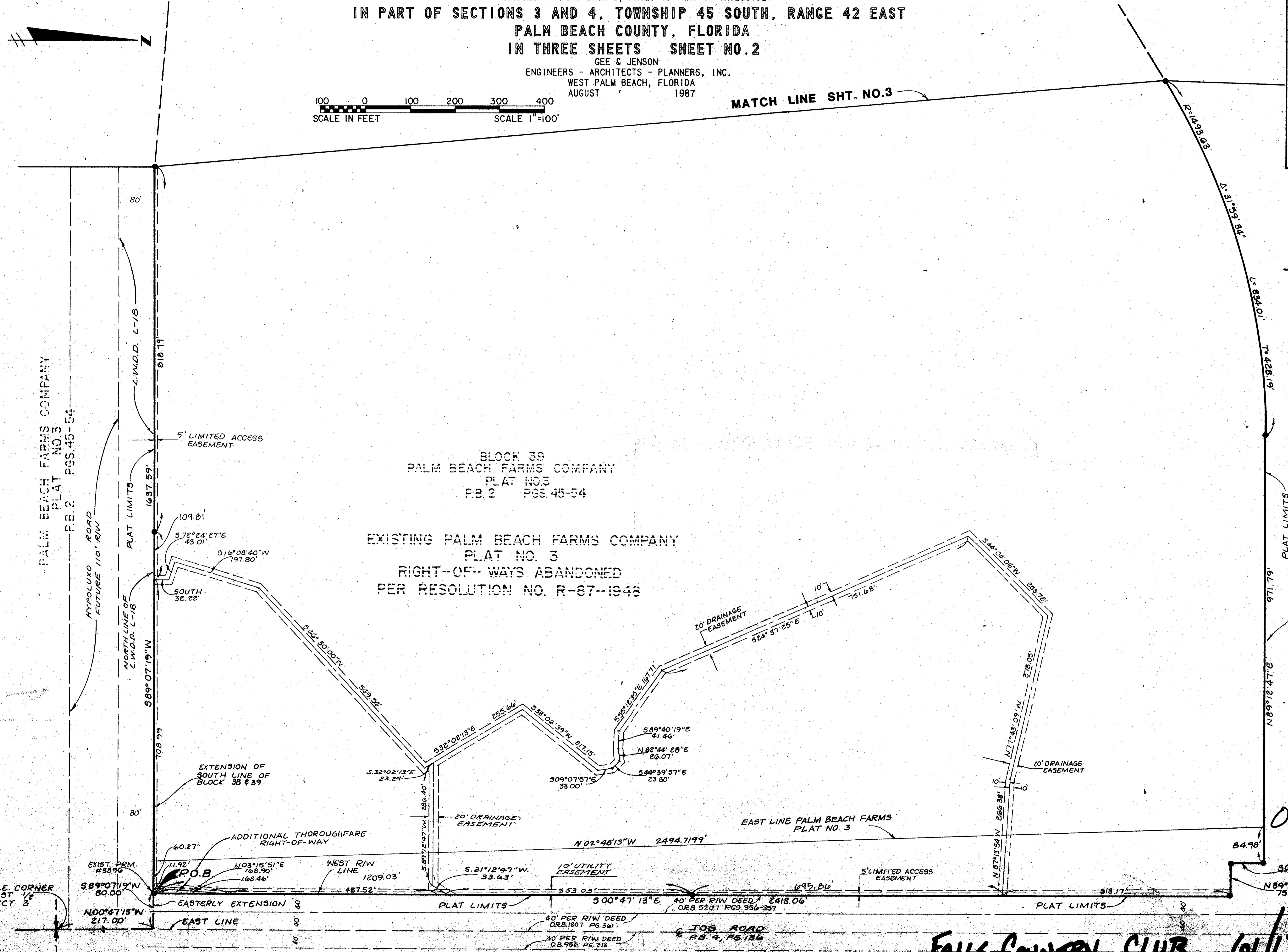
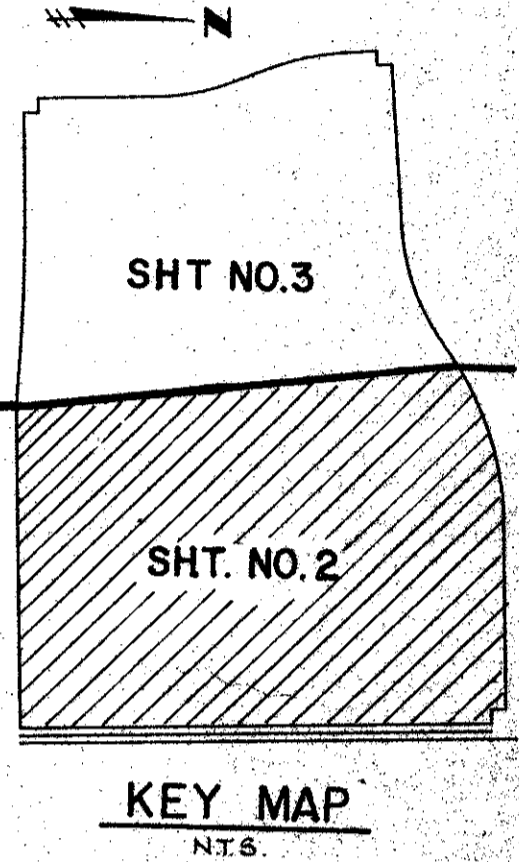
GEE & JENSON
ENGINEERS - ARCHITECTS - PLANNERS, INC.
WEST PALM BEACH, FLORIDA
AUGUST 1987



MATCH LINE SHT. NO. 3

STATE OF FLORIDA
COUNTY OF PALM BEACH
This plat was filed for
record at _____ M. this _____ day
of _____ 1987, and duly
recorded in Plat Book No. _____
on Page _____.

JOHN B. DUNKLE
Clerk Circuit Court
By: _____ D.C.



SUBDIVISION Falls Country Club
BOOK 61 B
PAGE 174
DATE 8-31-87
BY JLD

COMPUTED WLD
DRAWN PAC
CHECKED JLD
COMMENTS
APPROVED
REVISION

PALM BEACH FARMS COMPANY
BLOCK 39
PLAT NO. 3
P.B. 2 PGS. 45-54

0510-001

FALLS COUNTRY CLUB 01/178